



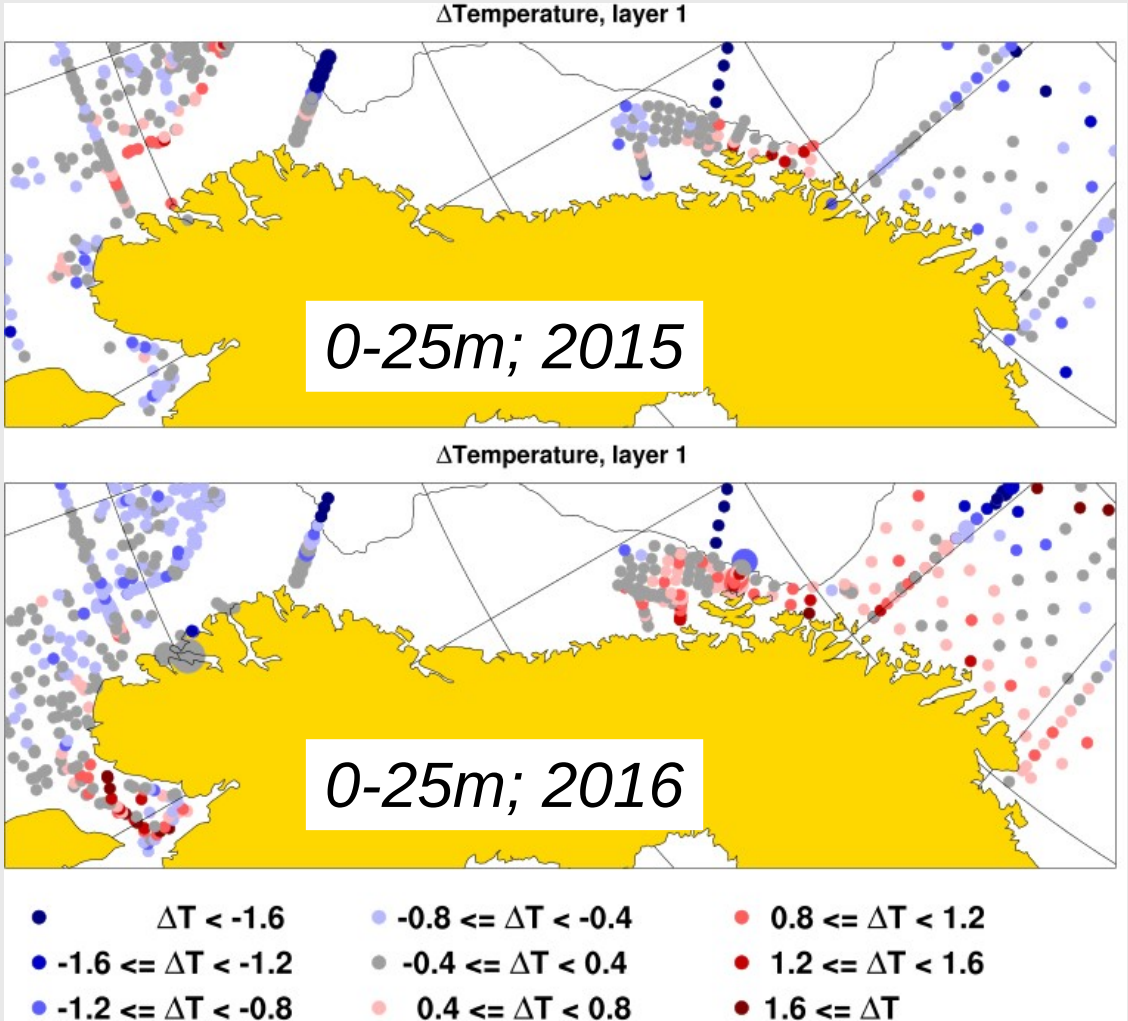
Norwegian
Meteorological
Institute

Update of validation results for the operational implementation of NorKyst-800m

Arne Melsom

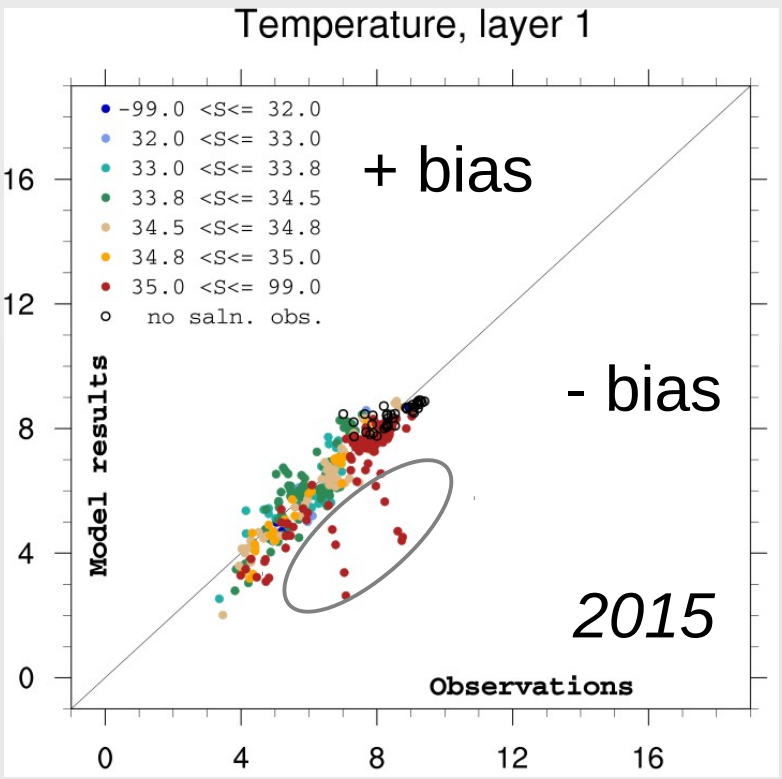
Annual REGLICE project meeting, Matre, 2016-09-13 - 14

Results for J-F-M from validation of operational NorKyst-800m: **Temperature**

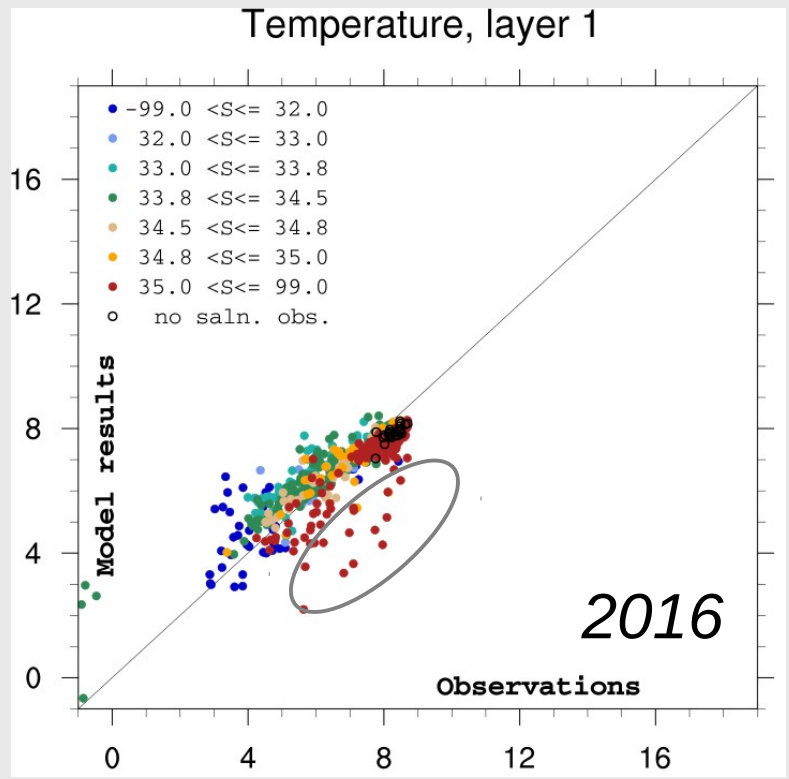


- Results are similar in 2015 and 2016
- General quality of results is fair
- Exception is deep ocean regions, with a cold bias
- There are a few «regional signals», with modest changes

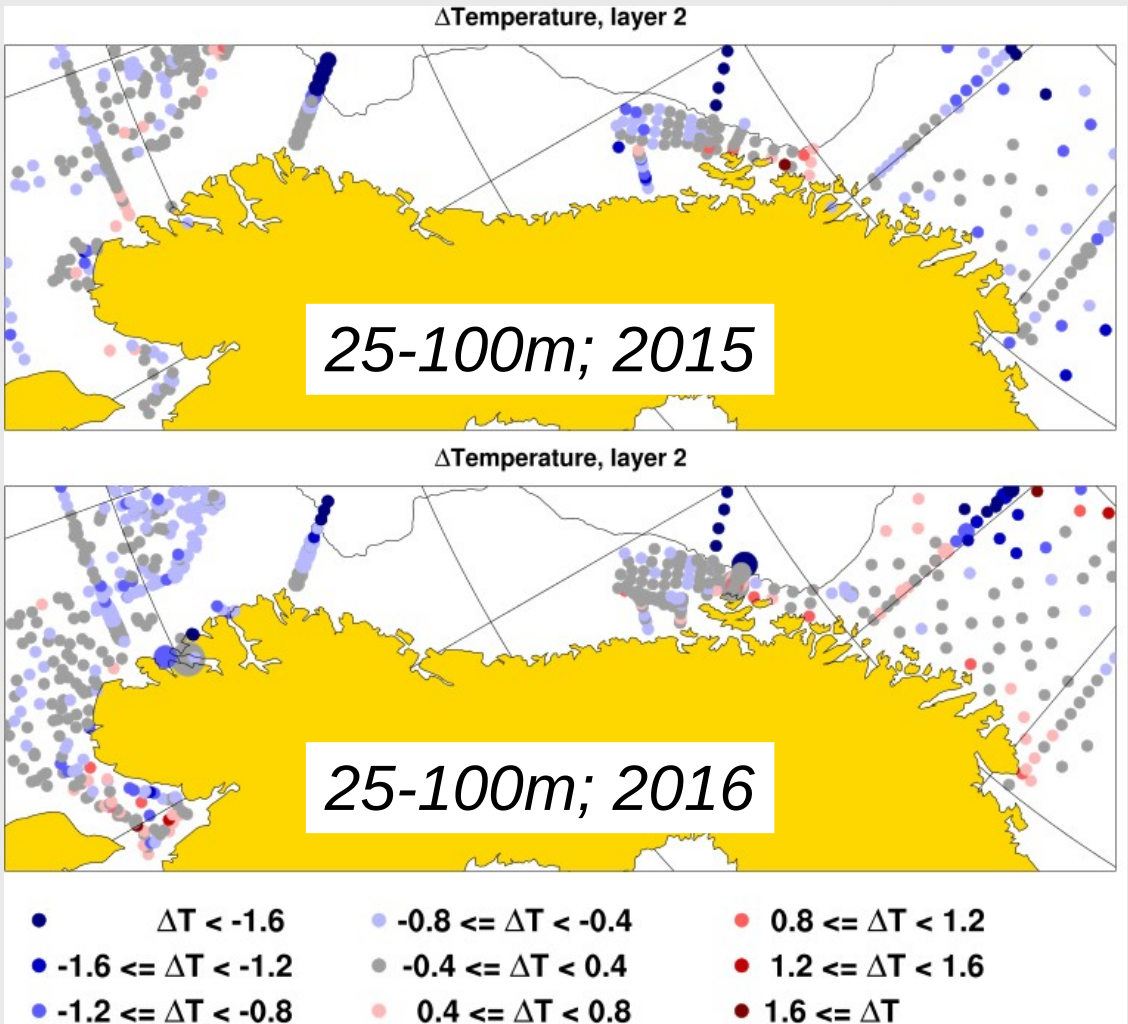
Results for J-F-M from validation of operational NorKyst-800m: **Temperature**



Layer 0-25m

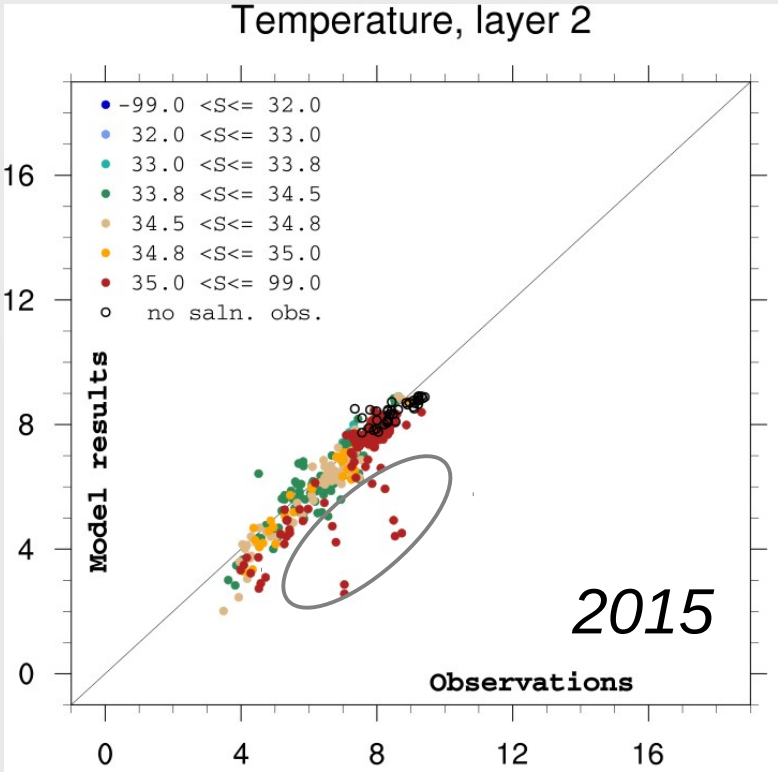


Results for J-F-M from validation of operational NorKyst-800m: **Temperature**

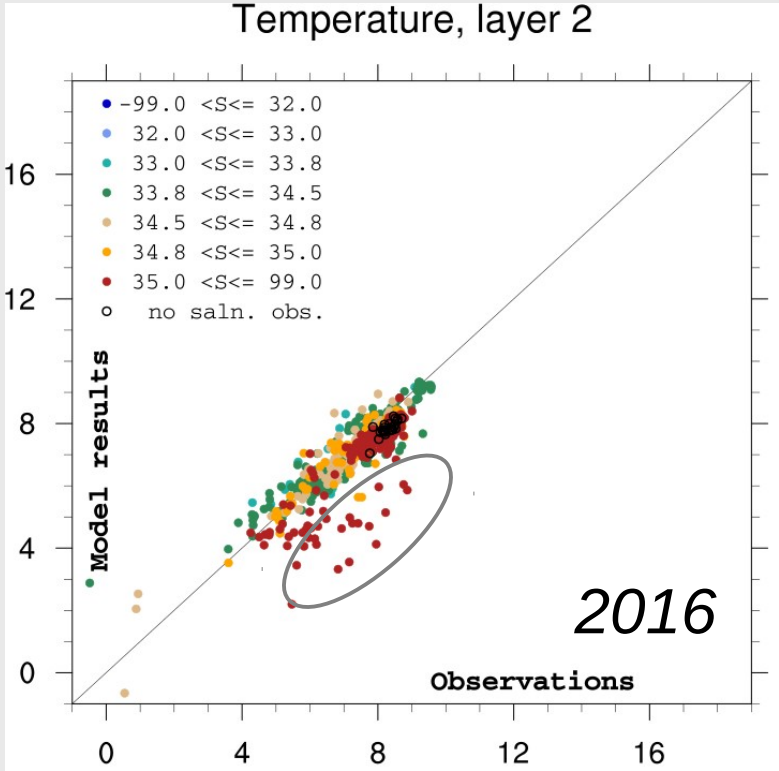


- Results and interpretation are very similar to those seen for the 0-25m layer

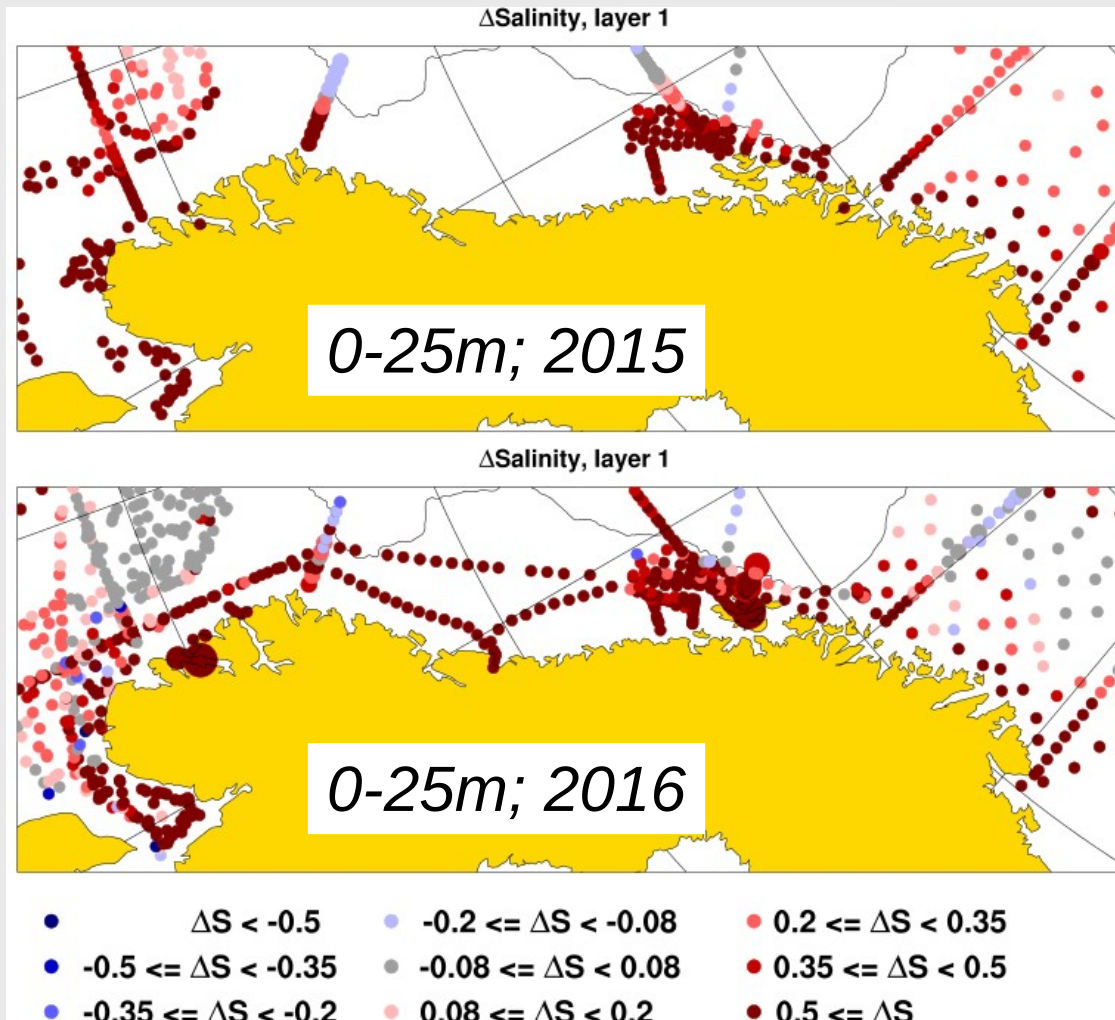
Results for J-F-M from validation of operational NorKyst-800m: **Temperature**



Layer 25-100m



Results for J-F-M from validation of operational NorKyst-800m: **Salinity**



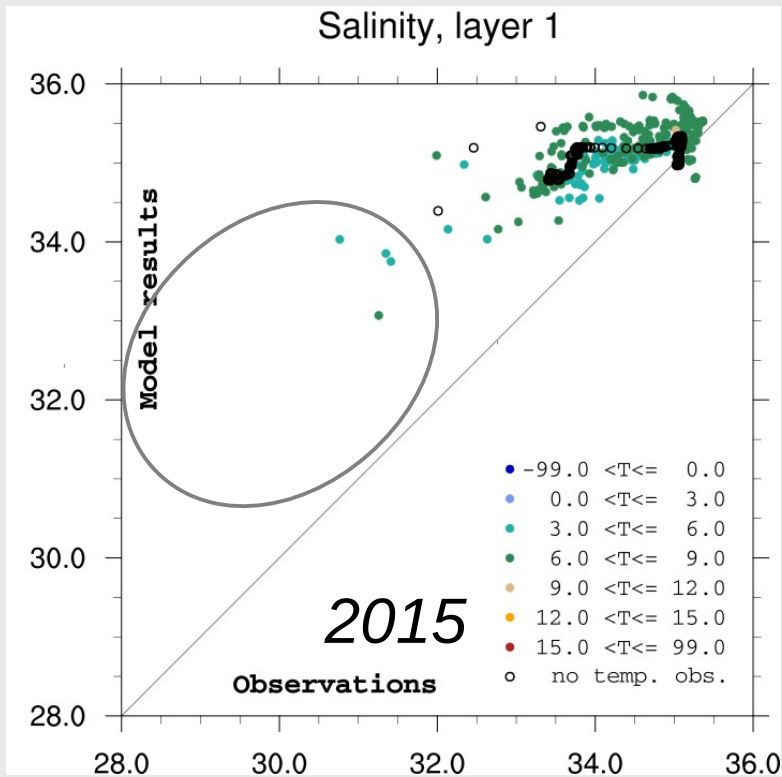
- Results are similar in 2015 and 2016
- General quality of results is poor, with large salinity biases
- More observations in southern domain in 2016
- There are a few «regional signals», with modest improvements, BUT:

Relevant issues from operational log:

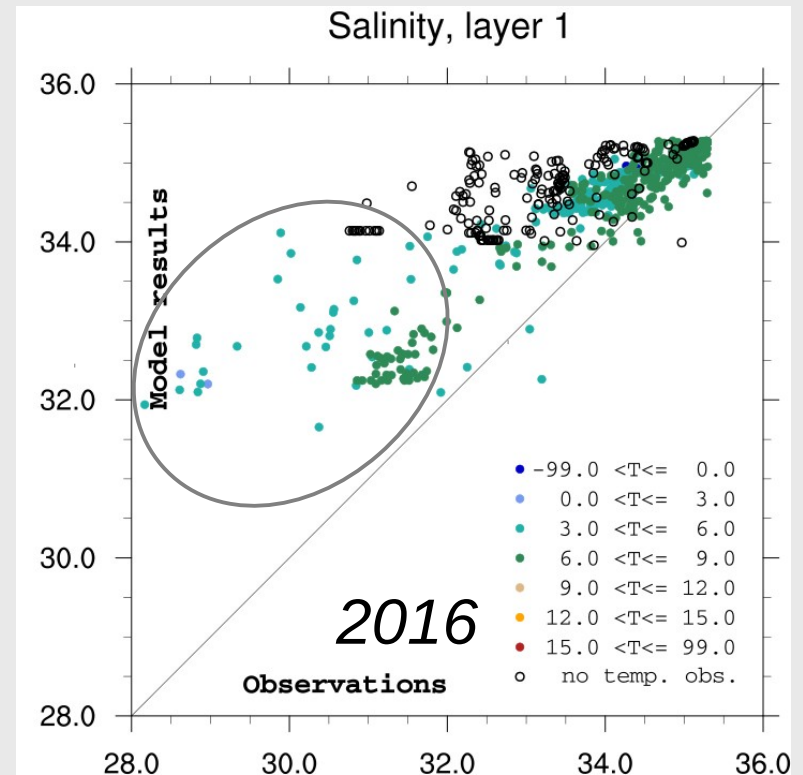
2015.10.21: Added nudging of salinity
(whole 3d-field, towards Arctic-20km)
in Nordic-4km. Timescale is 10 days,
but should be increased when the model
seems sane again...

2015.11.26: Increased nudging timescales for salinity
Towards climatology from 10 to 50 days.
Change was done to A20 and N4,
and also introduced to N800

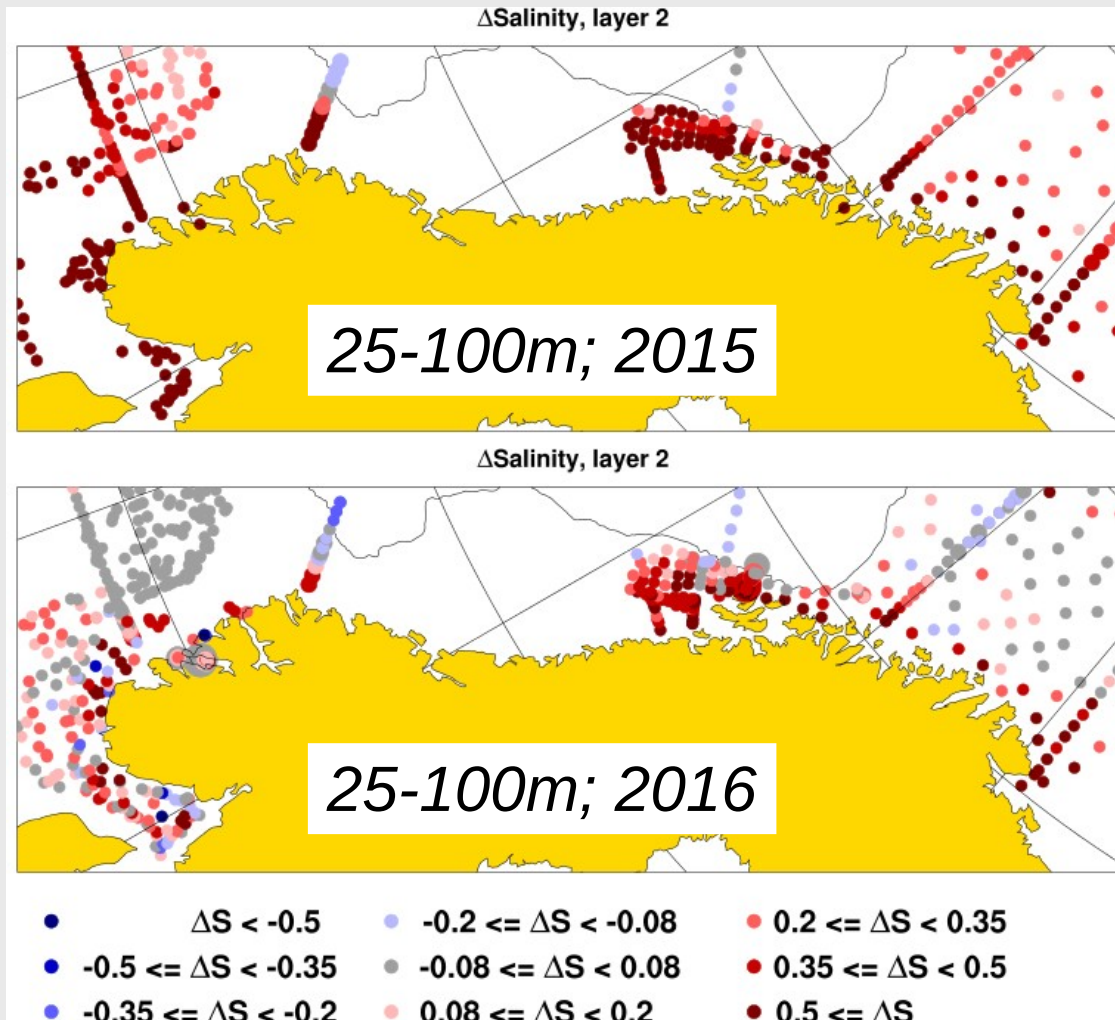
Results for J-F-M from validation of operational NorKyst-800m: Salinity



Layer 0-25m

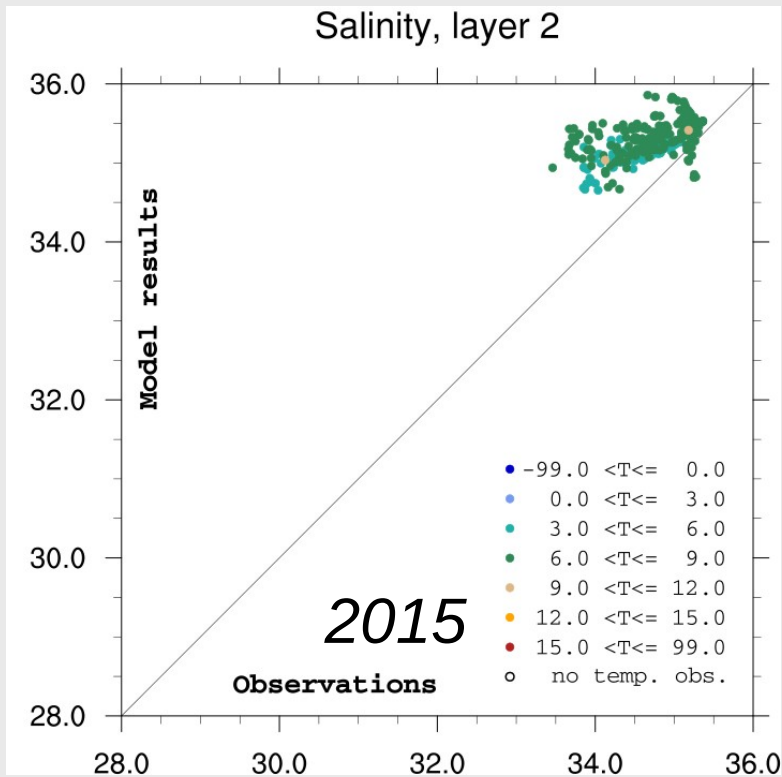


Results for J-F-M from validation of operational NorKyst-800m: Salinity

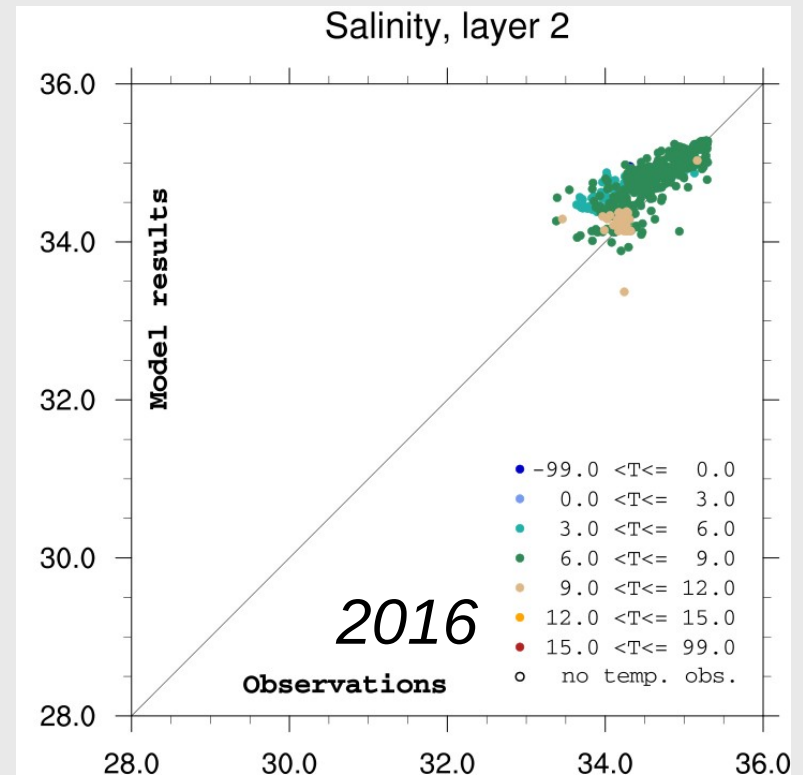


- General quality of results is poor, but less so in 2016 than in 2015
- Improvements from 2015 to 2016 are more evident than in the upper layer

Results for J-F-M from validation of operational NorKyst-800m: Salinity



Layer 25-100m





Norwegian
Meteorological
Institute